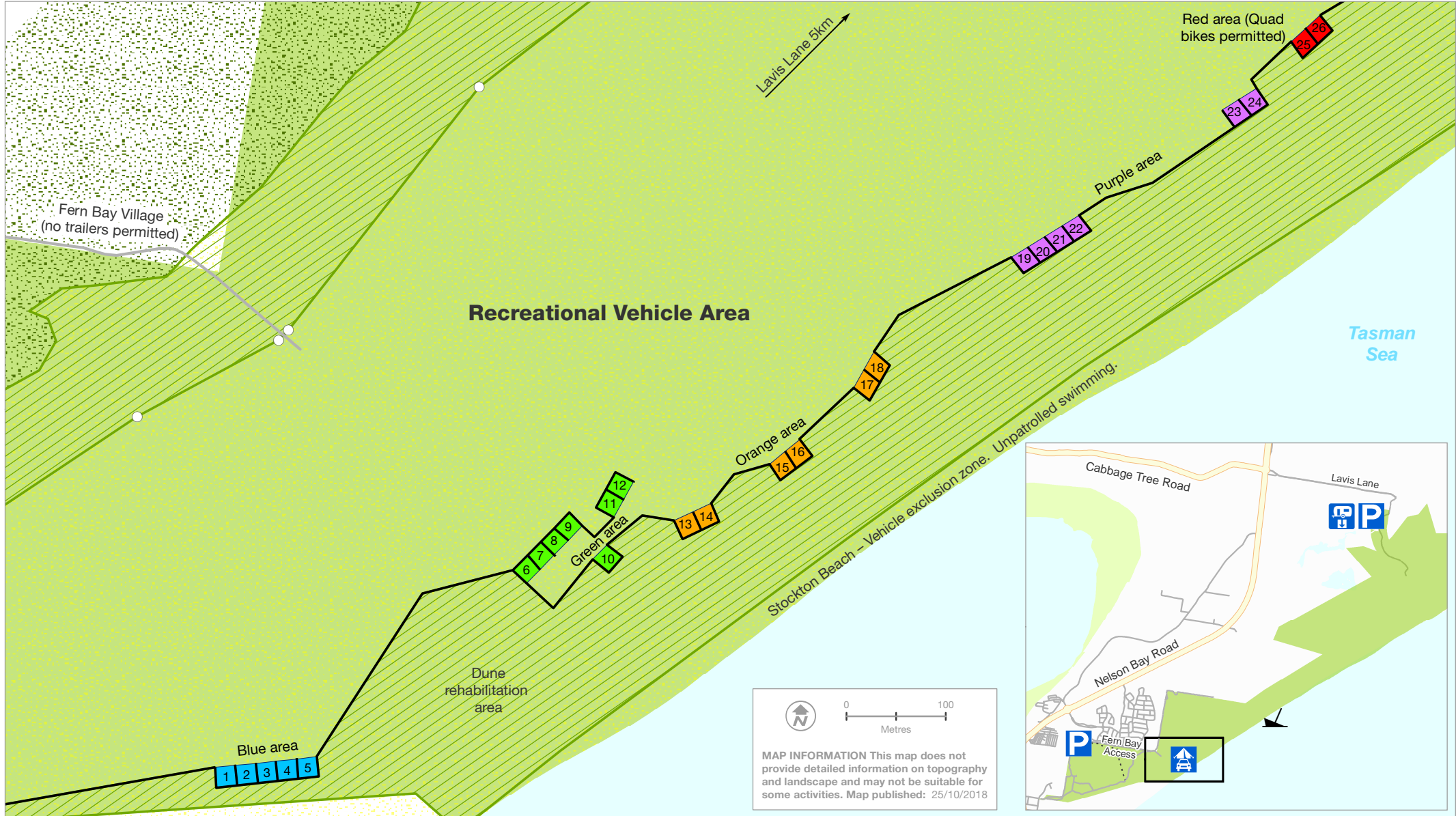




Worimi Conservation Lands

Ganyamalbaa (Gunya-mul-ba) camping area trial



Camping areas

- | | | | | | | | | | |
|--|--------|--|---------------|--|-----------------------|--|-----------------------|--|--|
| | Blue | | Arterial road | | Vehicle based camping | | Syгна wreck | | Worimi Regional Park & State Conservation Area |
| | Green | | Local road | | Parking | | Fence | | other NPWS reserve |
| | Orange | | Walking track | | Dump point | | Boundary marker poles | | |
| | Purple | | Vegetation | | | | Exclusion area | | |
| | Red | | Sand | | | | | | |

MAP INFORMATION This map does not provide detailed information on topography and landscape and may not be suitable for some activities. Map published: 25/10/2018



A partnership between
Worimi Conservation Lands and
NSW National Parks and Wildlife Service

